



# COMMUNITY NEWSLETTER

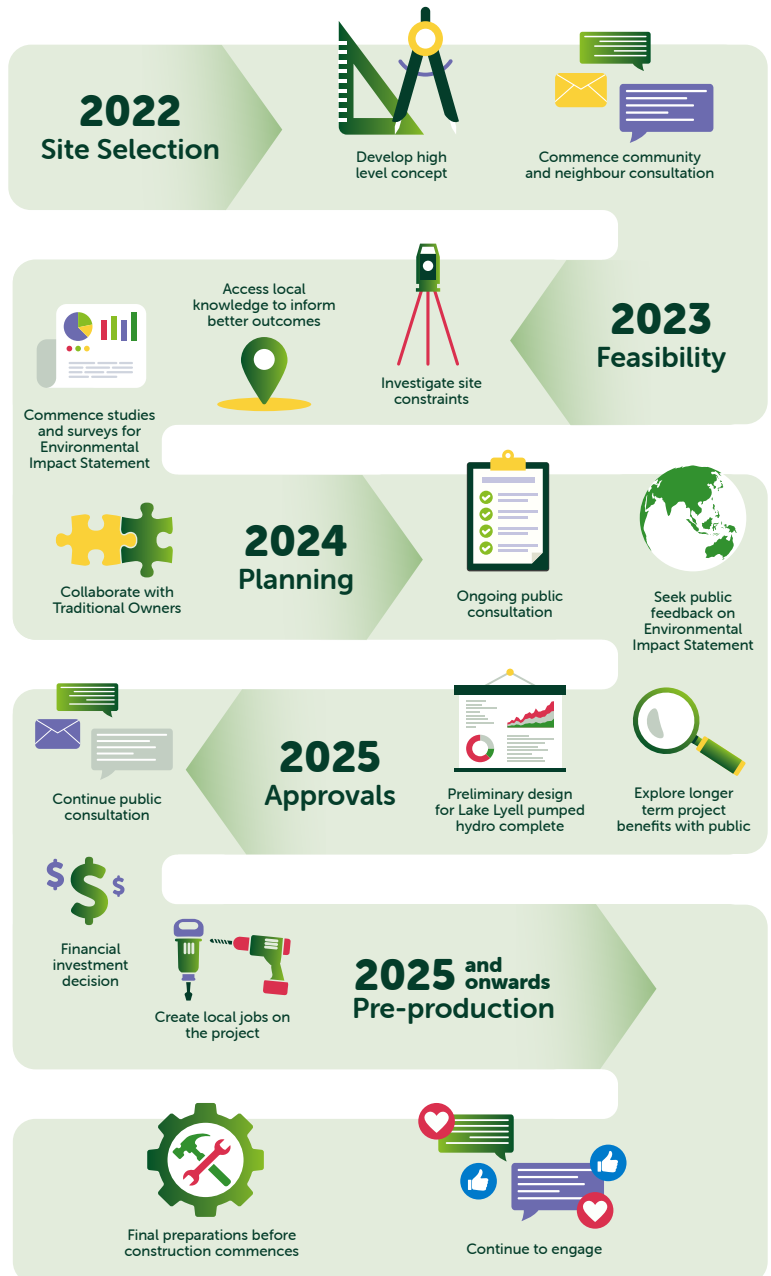
## Lake Lyell Pumped Hydro Energy Storage

### Where is the project at?

We're in the early stages of investigating building a 350MW pumped hydro facility on land EnergyAustralia owns near Lithgow.

Large civil projects like this take careful planning. Project scoping, planning and detailed environmental assessments will take up to two years before we can arrive at an appropriate concept design.

We are in the project scoping phase and a scoping report with details of our intended social and environmental investigations has been prepared for submission to the NSW Department of Planning and Environment. This will be made publicly available in coming months. Stakeholder feedback will continue to play an important role as we progress with these investigations. EnergyAustralia will update the community soon on opportunities to review this program of work and provide input and feedback.







## Planning approvals

The Lake Lyell pumped hydro project is a State Significant Development. This means we must complete a full program of technical and environmental studies to inform a safe and sustainable design for the project as part of the Environmental Impact Statement (EIS).

The project has also been assessed as a Controlled Action by the Commonwealth Government under the *Environment Protection and Biodiversity Conservation Act 1999 (Cth.)*, known as the EPBC. This means it will also require Commonwealth approval with bilateral assessment via the NSW planning approvals process.

This determination gives much-needed certainty on the breadth and substance of our EIS and EPBC environmental and technical studies. We want all potential effects of the project to be assessed.



## Geotechnical and groundwater studies

We recently completed an initial geotechnical drilling program to assess ground conditions at the proposed project site. The program went smoothly with some delays due to wet weather. The works involved drilling eight bore holes. Six have been sealed while two have been kept for ongoing water monitoring. Seismic and resistivity surveys were also conducted as part of the program with laboratory testing to follow.

We are now looking to complete additional drilling to further assess geological conditions and to establish and develop a more detailed groundwater modelling and monitoring program. Subject to Council approval, these new works will commence later in 2023 and take three to five months to complete. Data collected will be used to further assess the technical and environmental feasibility of the project and will be incorporated into the EIS.

For safety and security reasons, access to the testing site will remain closed to allow these site works to take place. Local residents are advised to observe safety signs and avoid entering the site when access is closed.



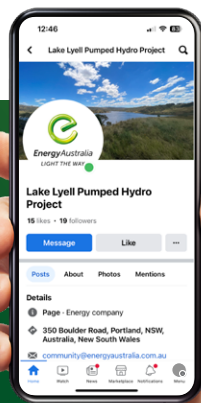
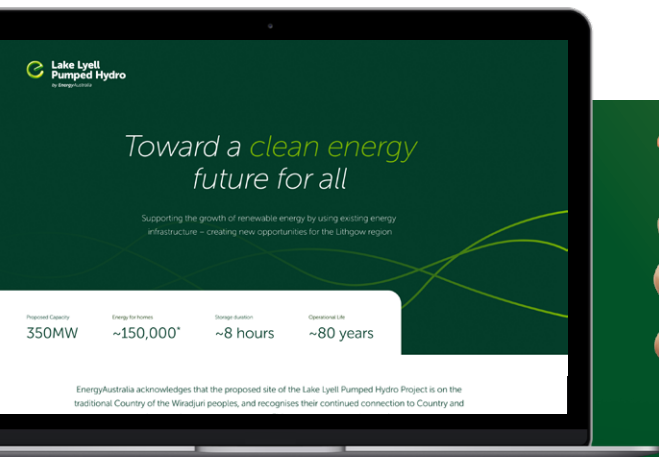
Full feasibility investigations will extend throughout 2023 and 2024 before a decision will be made on whether the project will proceed.



## Engagement with Traditional Owners

Mingaan Wiradjuri Aboriginal Corporation spent two days with the project team teaching them all about the history and culture of First Nations peoples. We were grateful for the opportunity to learn how we can work with Traditional Owners to identify and preserve local cultural heritage.

We are thankful to both Aunty Sharon and Aunty Helen for welcoming us to Country and sharing their knowledge, and Senior Elders Uncle Glen Morris (better known as Uncle Bing) and Uncle Amos Donovan, for sharing their experience about cultural safety, community consultation and cultural landscapes.



## New website and Facebook page

Keep up to date with the project by following us on Facebook at 'Lake Lyell Pumped Hydro' or at our new website. Here you'll be able to find out the latest news, ask questions and offer feedback.

[lakelyellpumpedhydro.com.au](http://lakelyellpumpedhydro.com.au)

## We're here to help

Got a question or want to provide feedback?  
Interested in having a member of our project team  
talk to your community group?

✉ [community@energyaustralia.com.au](mailto:community@energyaustralia.com.au)

☎ 1800 574 947

🌐 [lakelyellpumpedhydro.com.au](http://lakelyellpumpedhydro.com.au)



Supported by



**Public acknowledgement and disclaimer:** This project is proudly funded by the NSW Government's Pumped Hydro Recoverable Grants Program. The views expressed herein are not necessarily the views of the NSW Government. The NSW Government does not accept responsibility for any information or advice contained herein.